



ISSUE 01 · MMXXVI



TerraNova Minerals And Industries

INNOVATION IN MINERALS

*"From our own earth.
Finished by our own hands."*



MINERALS & INDUSTRIES · EST MMXXVI

ANANTAPUR · ANDHRA PRADESH · PRIVATE LIMITED

The Land.

Forty hectares. One captive reserve.

Our mines and plant sit on a single forty-hectare estate at Odullapalli, Anantapur District — the dry, quartz-rich belt of Andhra Pradesh. The reserve is ours. The minerals are captive. Every gram of output can be traced back to a single hillside.

40

HECTARES

40 MT

PROVEN RESERVE

2025

EST.

5

HILLS

7

STAGES

A Captive Reserve.

From our own earth.

40

HECTARES · FREEHOLD

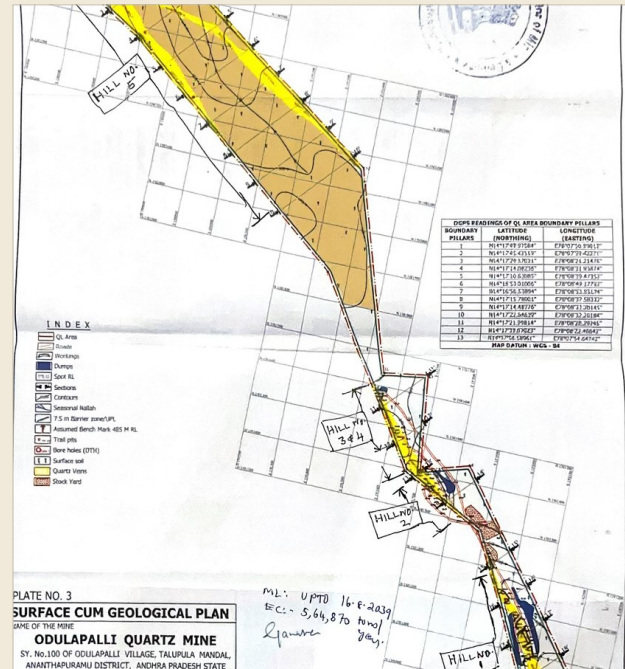
40 MILLION MT

PROVEN QUARTZ RESERVE

Most mineral companies buy their raw material. We draw ours from beneath our feet. The forty-hectare estate at Odullapalli holds five distinct quartz hills and the plant that processes them — a rare, end-to-end setup in this district.

Because the reserve is captive, nothing in our supply chain depends on third-party mines. Quality, tonnage and delivery are ours to control — and ours to answer for.

THE ESTATE



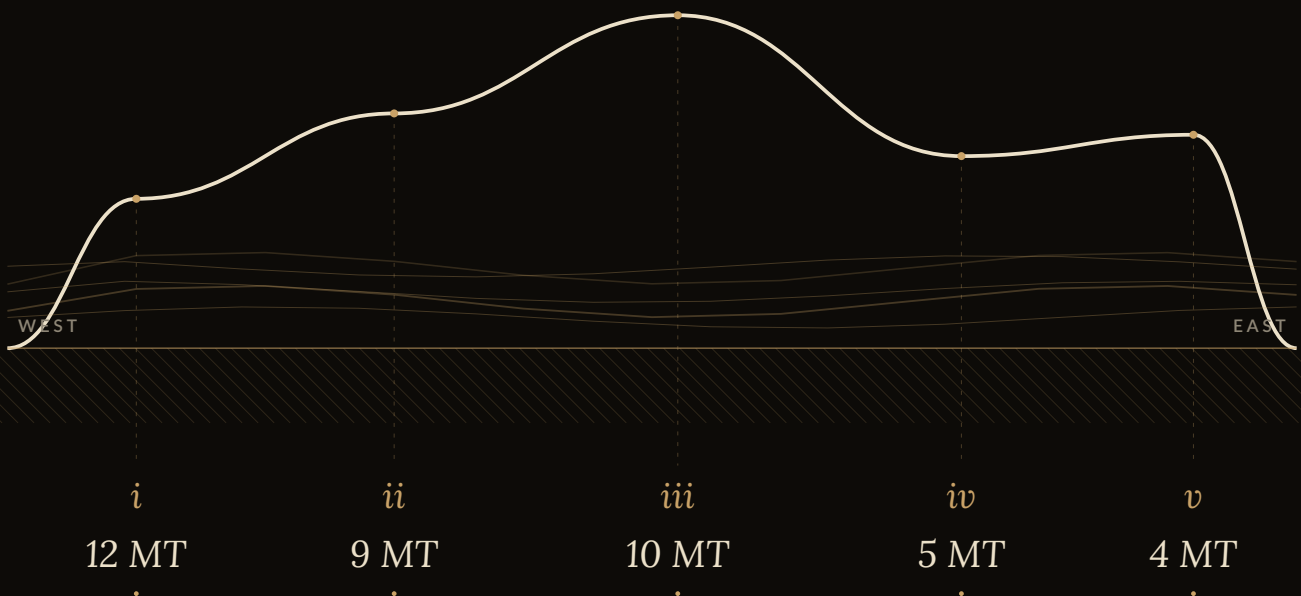
- FIVE QUARTZ HILLS *Graded separately*
- PROCESSING PLANT *7-stage line*
- STOCKYARD *Size-graded*
- ESTATE *40 hectares · freehold*

FIVE LODES · ONE ESTATE

Five Hills.

Each of them, by name.

ODULLAPALLI ESTATE · THE FIVE LODES, FROM EAST TO WEST



Each is mined and stockpiled separately — blended only when the chemistry calls for it.

"Same earth. Five characters."

Silica.

Older than the soil.

*Two billion years
in the dark of the rock.*

*Crystal. Glass. Sand.
One compound, three lifetimes.*

*Hard as a knife edge.
Deaf to chemistry.*

SiO₂

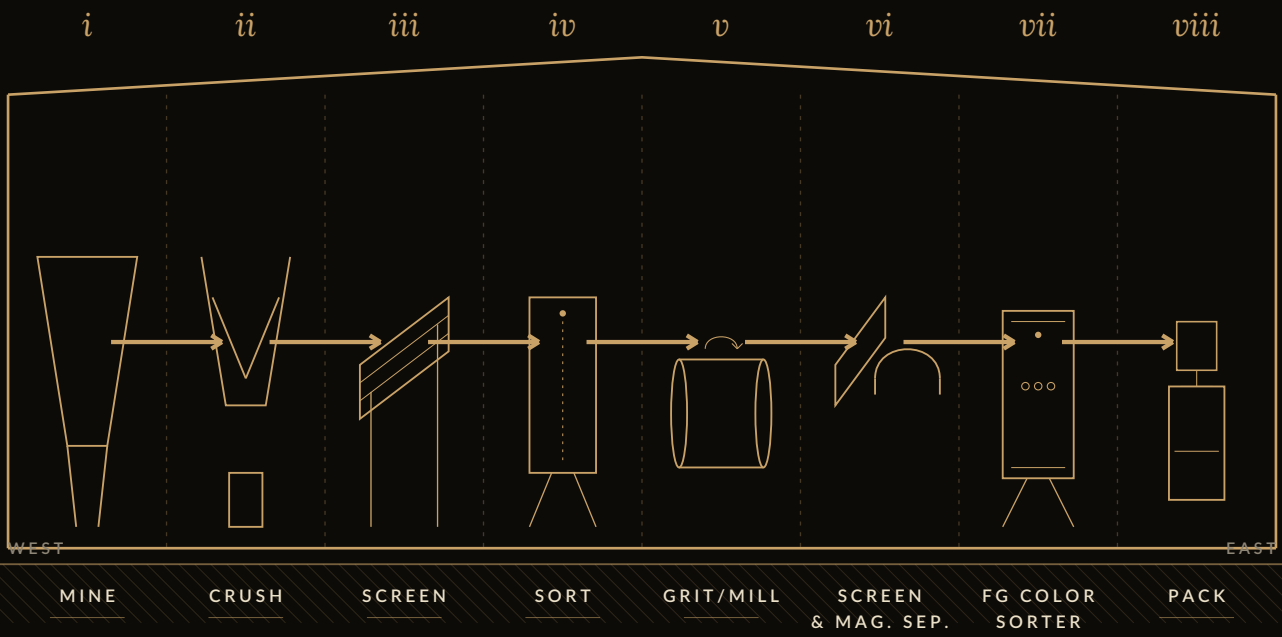
FORMULA	HARDNESS	MELTING	DENSITY	AGE	COLOUR
SiO ₂	7 / 10	1,710 °C	2.65 g/cm ³	≈ 2 Ga	Colourless

EIGHT STAGES · ONE LINE

In the Plant.

Built to be walked, not watched.

PLANT BUILDING · CROSS-SECTION · WEST ↔ EAST



Eight stages, one continuous line. From mine outlet to packing dock – no control room, no batch breaks.

viii
STAGES

i
LINE

"One line. Built to be walked."

Quartz Grit.

Calibrated to the half millimetre.

Sized between 0.1 and 0.4 mm – washed three times before bagging.



99.2%

SiO₂ · PURITY

<0.08%

Fe₂O₃ · IRON

0.1 – 0.4

MILLIMETRES

1.3 MT

JUMBO BAG

Ramming Mass.

Silica, dry-blended for the hot face.

Three blends – matched to your melt.

A clean, low-iron silica compound for steel and foundry linings. Available in Normal, Boron, and Boric Mix grades — chosen to suit your furnace chemistry and melt requirements.

N

NORMAL

Baseline silica mix · routine ferrous and alloy induction campaigns.

SiO₂ 99.0%
Fe₂O₃ <0.08%

B

BORON

Boron-dosed · longer campaign life on carbon-steel melts.

SiO₂ 98.7%
B₂O₃ 0.6%

B+

BORIC MIX

Boric-acid blended · premium lining for high-duty alloys.

SiO₂ 98.4%
B₂O₃ 1.2%

99.0%

SiO₂ · PURITY

<0.08%

Fe₂O₃ · IRON

0.1 – 8

MILLIMETRES

25 / 50

KG · BAGS / PALLET

Solar Sand.

Low-iron silica · for the float-glass furnace.

Iron is the one element a clear-glass batch cannot see.



specimen · solar grade · 0.1 – 0.5 mm

"The only error we allow is the iron we cannot see."

WHY LOW IRON

Iron is the one element a float-glass furnace cannot forgive. Above one hundred parts per million it tints the glass green; above two hundred it bands and costs the panel a fraction of its yield.

99.5%

SiO₂ · PURITY

<100 PPM

Fe₂O₃ · TOTAL IRON

0.1 – 0.5

MILLIMETRES

1.3 MT

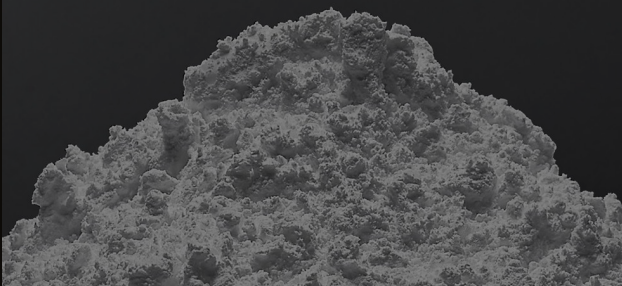
JUMBO BAG

Quartz Powder.

Milled with the same discipline as the grit.

Specified by mesh and by whiteness – not by availability.

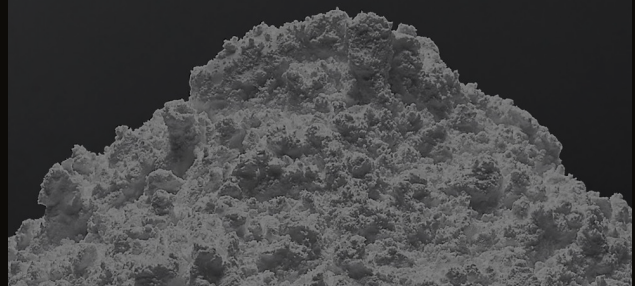
┌ A GRADE FILLER



A

*Brightest white · tightest tail ·
for premium fillers.*

┌ M GRADE FILLER



M

*Economy white · consistent
PSD · for volume fillers.*

200·325·400·500 / 200·325·400

MESH · A · M

< 0.1 %

MOISTURE

≥ 92

WHITENESS

custom meshes by written request · PSD report attached to every dispatch

Beyond the Grit.

Quartz, in every form our clients ask for.

Same estate · same chemistry · sized for the job.



i.
POWDER
200 – 500 mesh
Fillers · films

ii.
GRIT
0.1 – 0.4 mm
Eng. stone · glass

iii.
CHIPS
2 – 20 mm
Flooring · cladding

iv.
LUMPS
50 – 150 mm
Furnace · ferro-alloys

"One mineral · many forms — finished under one roof."

THREE INDUSTRIES · ONE GRIT

Where It Goes.

What the quartz becomes after the line.

Three industries hold themselves to tight tolerances. We send them the same mineral, sized and certified differently.

AFTER THE PLANT · THREE END PRODUCTS

i



QUARTZ SLAB
ENGINEERED STONE

0.1 - 0.4 mm · 99.2 % SiO₂

Calibrated grit, milled white powder. The mineral spine of engineered quartz surfaces.

ii

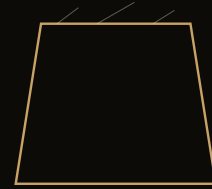


CLEAR PANE
FLOAT GLASS

0.1 - 0.5 mm · Fe < 100 ppm

Solar-grade silica. Hand-sorted. The cleaner the iron, the clearer the glass.

iii



RAMMING MASS
STEEL FOUNDRY

Normal · Boron · Boric Mix

Refractory ramming mass for induction furnaces. Three blends, written grade per consignment.

"Same mineral. Three different finishes."

WHAT WE PROMISE · EVERY LOT

The Standard.

A certificate of analysis travels with every dispatch.

Below is the typical chemistry on a TerraNova lot. The figure on the certificate is the figure on the bag.

CERTIFICATE OF ANALYSIS

TerraNova Minerals · Odullapalli Estate · Anantapur

REFERENCE	DATE	PRODUCT
TNV / 2026 / 04	Typical specimen	Quartz Grit · 0.1–0.4 mm
SiO ₂	Silica	≥ 99.4 %
Fe ₂ O ₃	Iron oxide	≤ 0.058 %
Al ₂ O ₃	Aluminium oxide	≤ 0.124 %
TiO ₂	Titanium oxide	≤ 0.038 %
CaO	Calcium oxide	≤ 0.04 %
LOI	Loss on ignition	≤ 0.18 %
H ₂ O	Moisture	< 0.10 %
WHITE	Whiteness	≥ 95

AUTHORISED · TERRANOVA MINERALS

SIGNATURE

"If we wrote it, we owe it."

OLD-FASHIONED · ON PURPOSE

The Work.

Four convictions, written down.

FOUR CONVICTIONS

*i***HAND-PICKED**

Every batch is inspected at the pit mouth. Off-grade rock never enters the plant.

*ii***HONEST NUMBERS**

The certificate is the material, on paper. We do not round up and we do not gloss over.

*iii***OWN-LOT REJECTED**

Rejection begins with our own name on the lot. If it will not pass our bench, it will not ship.

*iv***STAYED SMALL**

One family. One estate. One plant. We grew the output, not the moving parts.

"Old-fashioned. On purpose."

PART · TWO

The Hills in Sixteen.

A photographic walk through the estate.

Sixteen frames.

One estate.

Walk it slowly.

"From mine outlet to packing dock – in pictures."



ODULLAPALLI · ANANTAPUR

The Estate.

Hills, pit, plant and yard. Everything within three kilometres of the front gate.



THE RESERVE · FIVE HILLS

The Ridge.

One lease, five quartz bodies, shared by the same operators.

CONFIRMED RESERVE

40 MILLION TONNES

SURFACE DEPOSIT

12 MT

CORE RESERVE

28 MT

EXPECTED LIFE

40+ YEARS

RESERVE · 40 MT

Forty Million Tonnes.

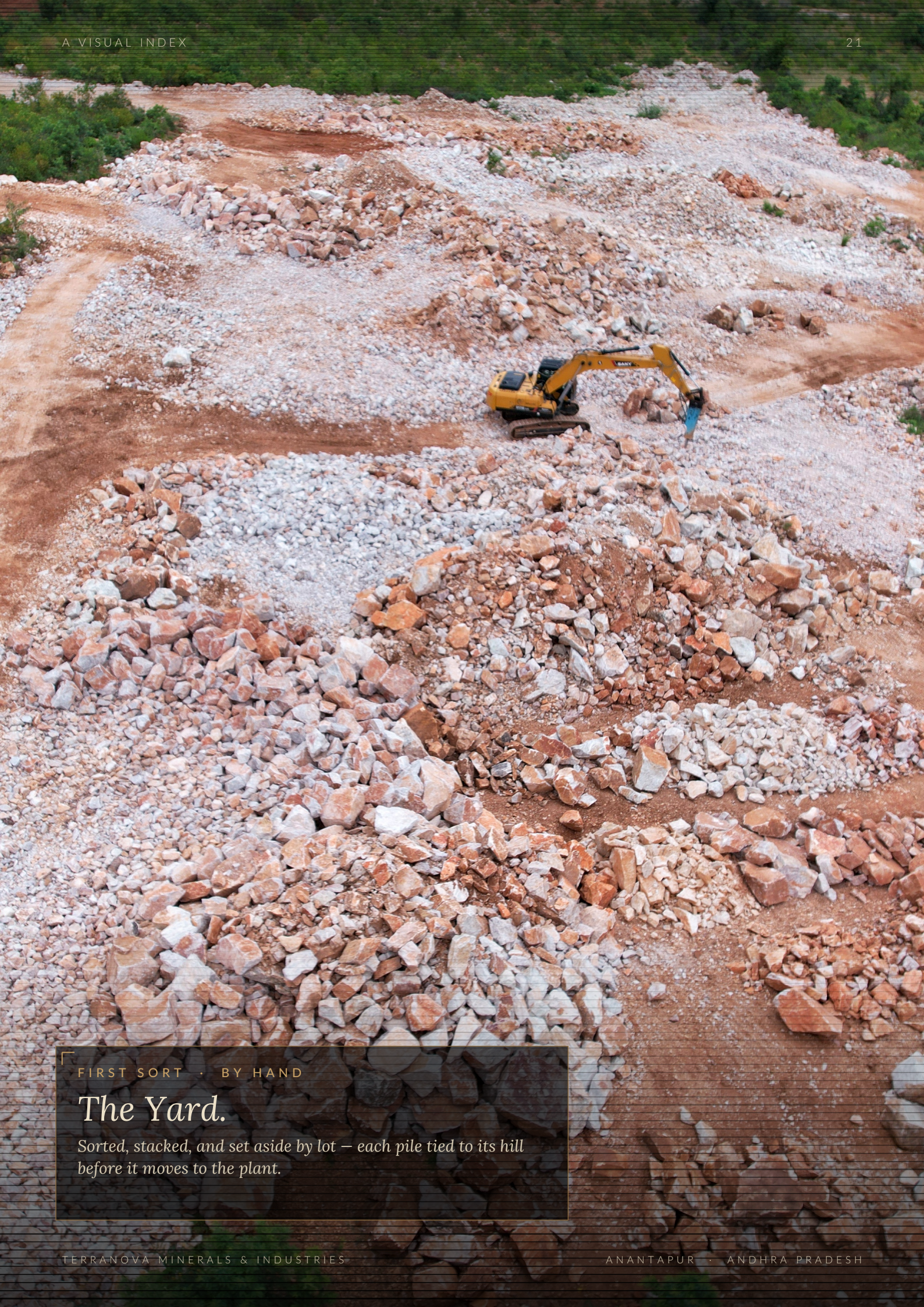
A conservative estimate of what is still in the ground.



OPEN CAST · BENCH BY BENCH

The Pit.

Worked in four-metre benches. No blasting of large faces. What is removed is weighed and counted.



FIRST SORT · BY HAND

The Yard.

Sorted, stacked, and set aside by lot — each pile tied to its hill before it moves to the plant.

TYPICAL CHEMISTRY

99.34% SiO_2

SPEC 99.20

Fe_2O_3

0.062 %

Al_2O_3

0.21 %

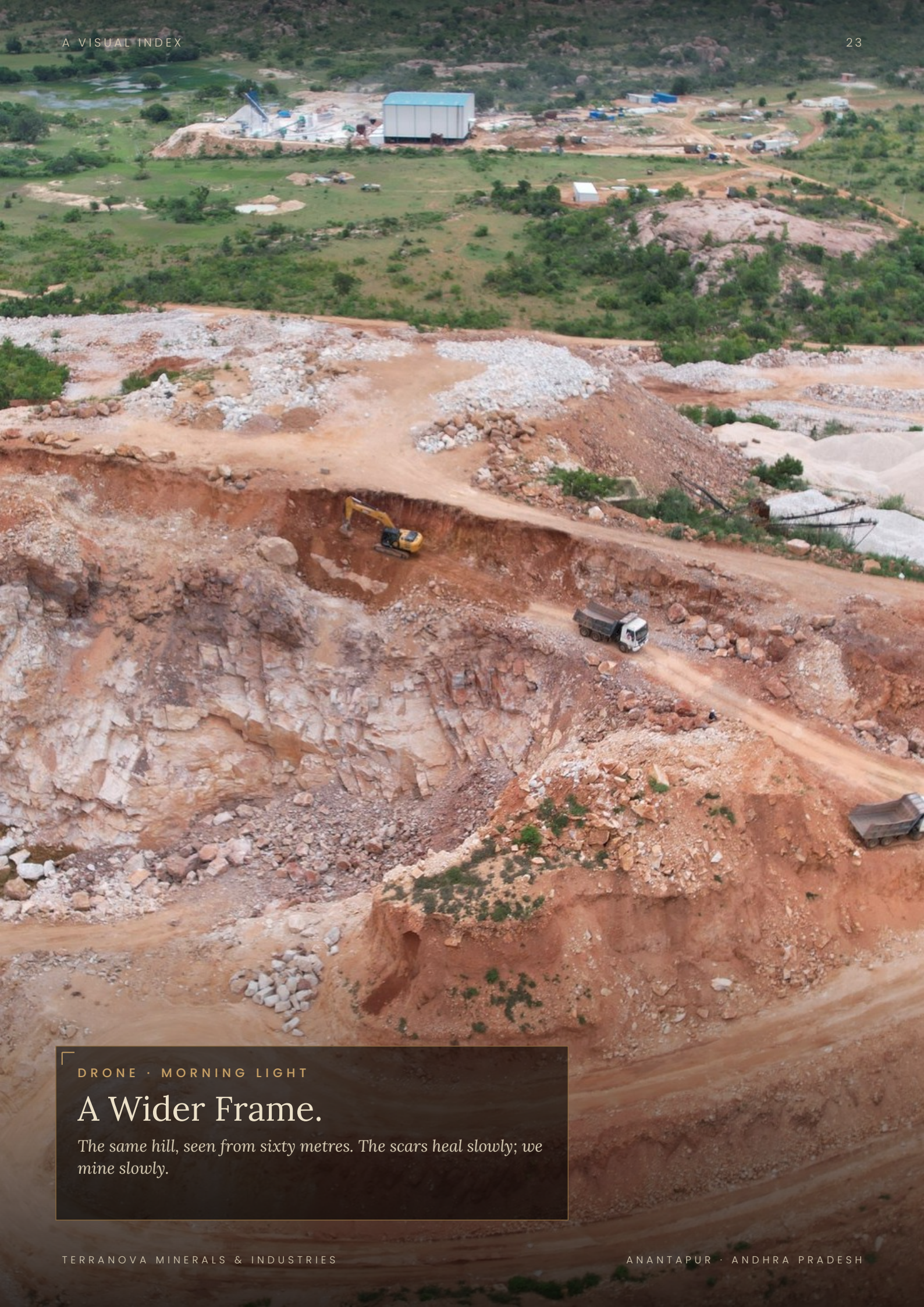
TiO_2

0.018 %

THE SEAM · AS IT COMES

The Rock.

Low-iron milky quartz, sorted by hand before it ever leaves the mine face.



DRONE · MORNING LIGHT

A Wider Frame.

The same hill, seen from sixty metres. The scars heal slowly; we mine slowly.



MINE TO MILL · 3 KM

The Short Haul.

Three kilometres from the pit to the crusher. Trucks do two trips and sleep at the yard.



UNDER COVER · DRY

The Stockpile.

Sorted lumps, kept dry, waiting their turn at the jaw crusher.

SEVEN STAGES

- 1 JAW
- 2 CONE
- 3 SCREEN
- 4 WASH
- 5 DRY
- 6 SORT
- 7 BAG

ONE PLANT · ONE LINE · ONE LOG-BOOK

PROCESS · ON THE LINE

The Line.

Seven stages, end to end – jaw, cone, screen, wash, dry, sort, bag. Every gram weighed on its way to the bag.

PARTICLE SIZE · REDUCTION



FIRST REDUCTION

Crushing.

Lump to grit. A jaw followed by a cone, each sized for the next step on the line.



ON THE LINE

Conveyors.

Belts, buckets, screens. Every gram on the line has a place to go.



THE LAST CHECK

Optical Sort.

Cameras that see what the eye can't. Anything off-colour, off-track, is rejected before bagging.

HOW IT SHIPS

50 KG



PP BAG

1.3 MT



FIBC

25 MT



BULK

20 FCL



CONTAINER

CHENNAI · KRISHNAPATNAM · BENGALURU · VIZAG



READY TO SHIP

Finished Goods.

Screened, washed, dried, bagged. The last time we touch it before the truck.

Address.



TerraNova Minerals And Industries INNOVATION IN MINERALS

PRIVATE LIMITED

COMMERCIAL HEAD

Nawate Sai Prabhu

MOBILE

+91 96187 56784

EMAIL

sai.prabhu@terranovalminerals.com

WEB

terranovalminerals.com

MINES + PLANT

Odullapalli, Anantapur District, Andhra Pradesh

WRITE TO US — WE REPLY WITHIN A WORKING DAY

CLOSING FRAME

The same hills.

The same hands. Thank you for walking the estate with us.